

OLD CINCINNATI POLICE STATIONS



DISTRICT TWO, 314 BROADWAY, CIRCA 1960



DISTRICT 3, WARSAW AVENUE, ORIGINALLY BUILT AS DISTRICT 9, IT WAS RENAMED DISTRICT 3 IN 1927, REMAINS IN USE 2006.



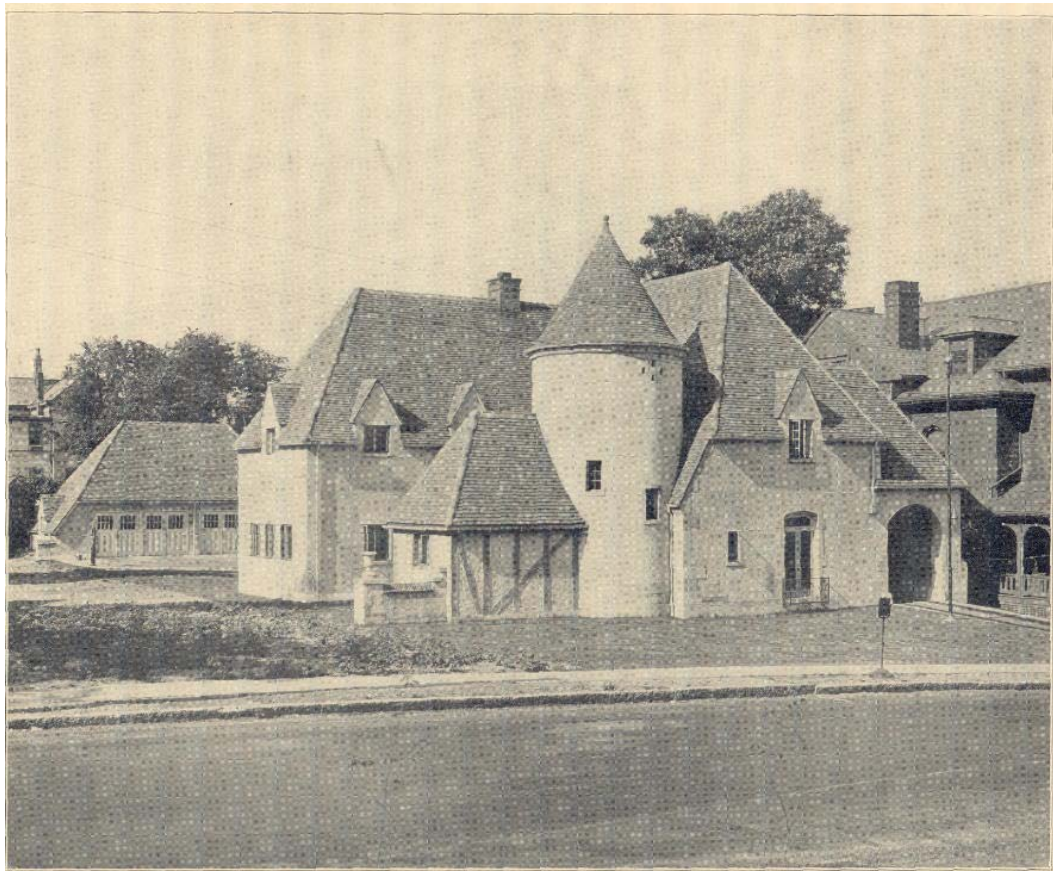
DISTRICT 4, DOWNTOWN 754 West Fifth Street



DISTRICT 6, 3855 EASTERN AVENUE, USED UNTIL THE 1950'S WHEN A NEW STATION WAS BUILT AT 3295 ERIE AVENUE



PATROL HOUSE 8, MCMILLAN AND RAVINE STREETS



NEW SEVENTH DISTRICT POLICE STATION

**DISTRICT 7, BEECHER STREET, WALNUT HILLS,
BUILT IN 1930**



District 10 Police Station



PATROL 2, 408 McAllister Street

**NOTES FROM RESEARCH MATERIAL
1889**

The present force assigned to District No. 6 (Fulton), District No. 7 (Walnut Hills), District No. 8 (Mt. Auburn), District No. 9 (Sedamsville, Price Hill, and territory west of the Mill Creek), and District No. 10 (Cumminsville), is not sufficient, and should be increased by assigning at least six additional patrolmen to each of the mentioned districts.

In 1902 the numerical strength had grown to 536 to serve a population of approximately 330,000. In the annual report were the ten police and ten patrol houses as follows:

POLICE STATION	LOCATION
First District	City Hall
Second District	Hammond Street
Third District	73 East McMicken Avenue
Fourth District	754 West Fifth Street
Fifth District	1024 York Street
Sixth District	3855 Eastern Avenue
Seventh District	Concord & Morgan Streets
Eighth District	2616 Vine Street
Ninth District	State Avenue, near Eighth Street
Tenth District	City Workhouse
Patrol house No.1	316 George Street
" No.2	408 McAllister Street
Patrol house No.3	32 Back Street
" No.4	748 West Fourth Street
" No.5	1026 York Alley
" No.6	Columbia & Delta Avenues
" No.7	Monfort & Westminster Streets
" No.8	McMillan & Ravine Streets
" No.9	820 Chateau Avenue
" No.10	3020 Colerain Avenue

PATRICK OLVEY, 7-31-2006